

Configuring Watsyn for DICOM Query Retrieve

Retrieve

Query/Retrieve is the process by which DICOM devices request information from a database and retrieve data and images through those requests.

Selecting an Application Entity for Query Retrieve

The Application Entity your computer uses for DICOM Query Retrieve is specified at the **AE Select** tab. You can specify a different Application Entity by selecting a different Application Entity Title from the list. You can also change the maximum number of responses that can be returned for a query at the **AE Select** tab.

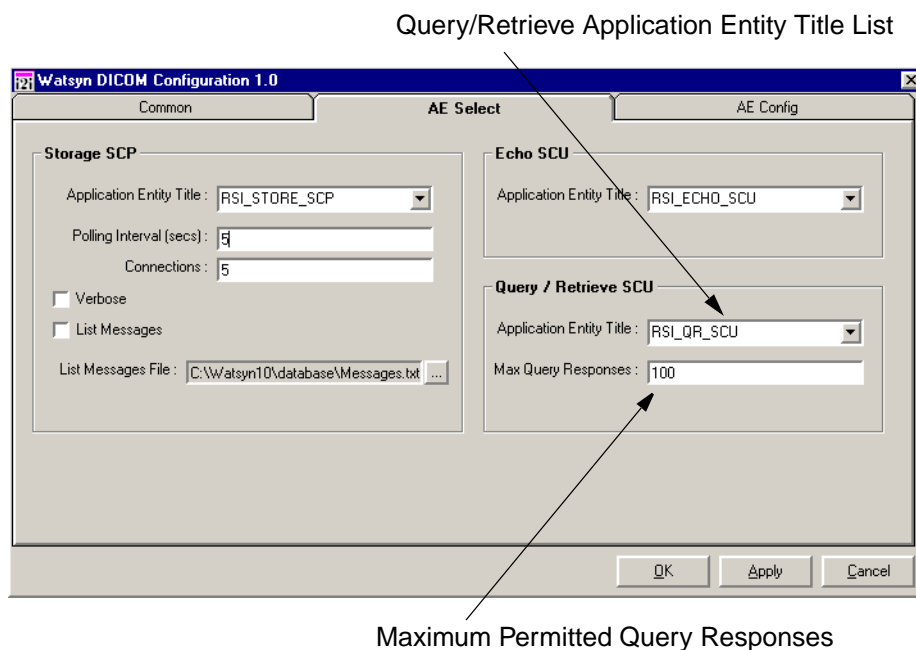



Figure 1-5: Specifying the Query/Retrieve SCU Application Entity Title

To specify a different Query/Retrieve SCP Application Entity Title:

1. Click the menu button  beside the current Application Entity Title to display the available Application Entity Titles.

2. Select a new Application Entity Title from the list.
3. Click **OK** to save changes and close the DICOM Configuration screen, click **Apply** to save without closing, or click **Cancel** to close without saving changes.

To change the maximum number of responses returned for a query:

1. Change the number in the **Max Query Responses** field.
2. Click **OK** to save changes and close the DICOM Configuration screen, click **Apply** to save without closing, or click **Cancel** to close without saving changes.

Creating, Modifying or Deleting a Query Retrieve SCP Application Entity

New Application Entities can be created, and existing Application Entities can be modified or deleted, at the **AE Config** tab of the DICOM Configuration Screen.

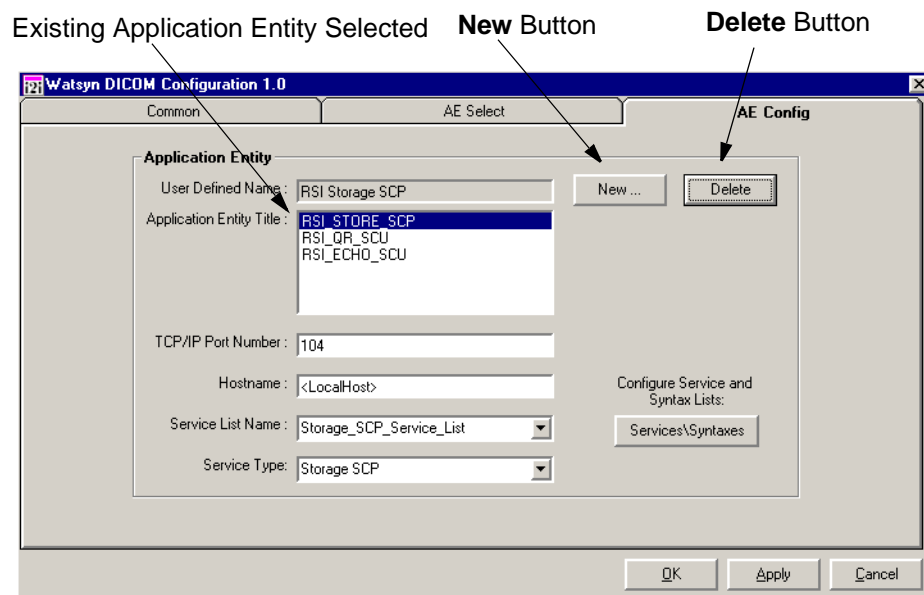


Figure 1-6: Configuring New and Existing Query Retrieve Application Entities

To create a new Application Entity:

1. Click **New**. The New Application Entity dialog appears.

2. Enter a name for the Application Entity in the **User Defined Name** field.
3. Enter a unique **Application Entity Title** for the Application Entity.
4. Enter the **TCP/IP Port Number** the Application Entity is to use.
5. Enter the **Hostname** of the computer that will run the Application Entity.
6. Select a **Service List Name** from the list.

Note

To view the contents of a Service List, or to create a new one, click Services/Syntaxes. See [“Service and Syntax Lists”](#) on page 5 for details.

7. Select a **Service Type** from the list.
8. Click **OK** to save the new Application Entity and close the New Application Entity dialog, or click **Cancel** to close without saving the Application Entity.

To modify an existing Application Entity:

1. Select the **Title** of the Application Entity you want to modify from the list.
2. Change the values in the **TCP/IP Port Number**, **Hostname**, **Service List Name**, and **Service Type** fields as necessary.
3. Click **OK** to save your changes and close the DICOM Configuration screen, **Apply** to save changes without closing DICOM Configuration, or **Cancel** to close without saving changes.

To delete an existing Application Entity:

1. Select the **Title** of the Application Entity you want to delete from the list.
2. Click **Delete**.